



DIŞ TİCARET

**BMT YAPI MALZEMELERİ
SAN. VE DIŞ TİC. LTD. ŞTİ.**

2023

**PRODUCTS AND SERVICES CATALOGUE
(CONSTRUCTION & ELECTRICAL)**

BMT YAPI MALZEMELERİ SAN. VE DIŞ TİC. LTD. ŞTİ.

www.bmtexport.com



ABOUT US

BMT EXPORT is founded in 2009 and working on electric materials & construction materials for our valuable clients.

We are representing over 50 factories in Turkey and our aim is to provide satisfaction with quality and cost-effective products.

We can provide complete solutions for export processes, from start to finish.

- Material sourcing (from top suppliers - with best pricing)
- Agreements (Performance Bonds - Order agreements - Contracts)
- Production control and factory check
- Payments (Letter of credit documentation - payment negotiation)
- Customs work in Turkey
- Forwarding (Air - Sea - Land)

FIELDS OF EXPERTISE

ELECTRICAL

- DECORATIVE POLES (WITH / WITHOUT FIXTURE)
- HIGHWAY POLES
- LED LIGHTING
- UNINTERRUPTIBLE POWER SUPPLIES
- VOLTAGE STABILIZERS
- INDUSTRIAL BATTERY CHARGERS
- VRLA - SLA - NICD - GEL - CAR BATTERIES
- TRANSFORMERS
- CCTV CAMERA SYSTEMS
- ELECTRICAL WIRES
- MOTORS - PUMPS
- ELECTRICAL PANELS - SWITCHES - BREAKERS

CONSTRUCTION

- MDF - STEEL - PVC DOORS
- FLOORING (LAMINATE - WOODEN)
- KITCHEN EQUIPMENT (INOX - FURNITURE)
- BATHROOM EQUIPMENT (TILES - TUBES)
- FIRE PREVENTION SYSTEMS (FIRE PANELS - PIPES - FOAM SYSTEM)
- BOILERS
- AIR CONDITIONERS
- CONCRETE PUMPS
- FITTINGS, PIPINGS, FLANGES, VALVES

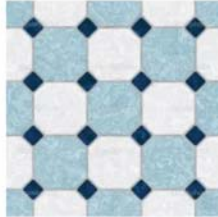
MDF - STEEL - PVC DOORS



KITCHEN EQUIPMENT (INOX - FURNITURE)



BATHROOM EQUIPMENT (TILES - TUBS)



FIRE PREVENTION SYSTEMS (FIRE PANELS - PIPES - FOAM SYSTEM)



BOILERS



AIR CONDITIONERS



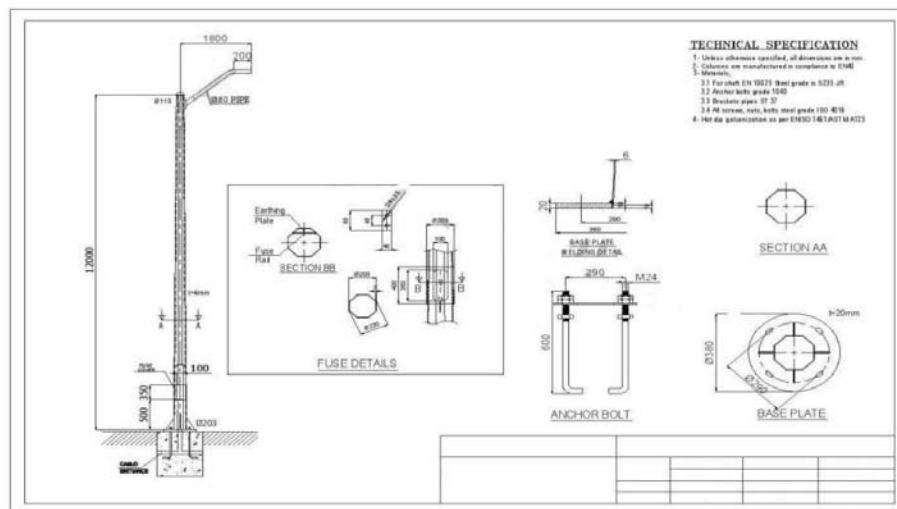
FITTINGS, PIPINGS, FLANGES, VALVES



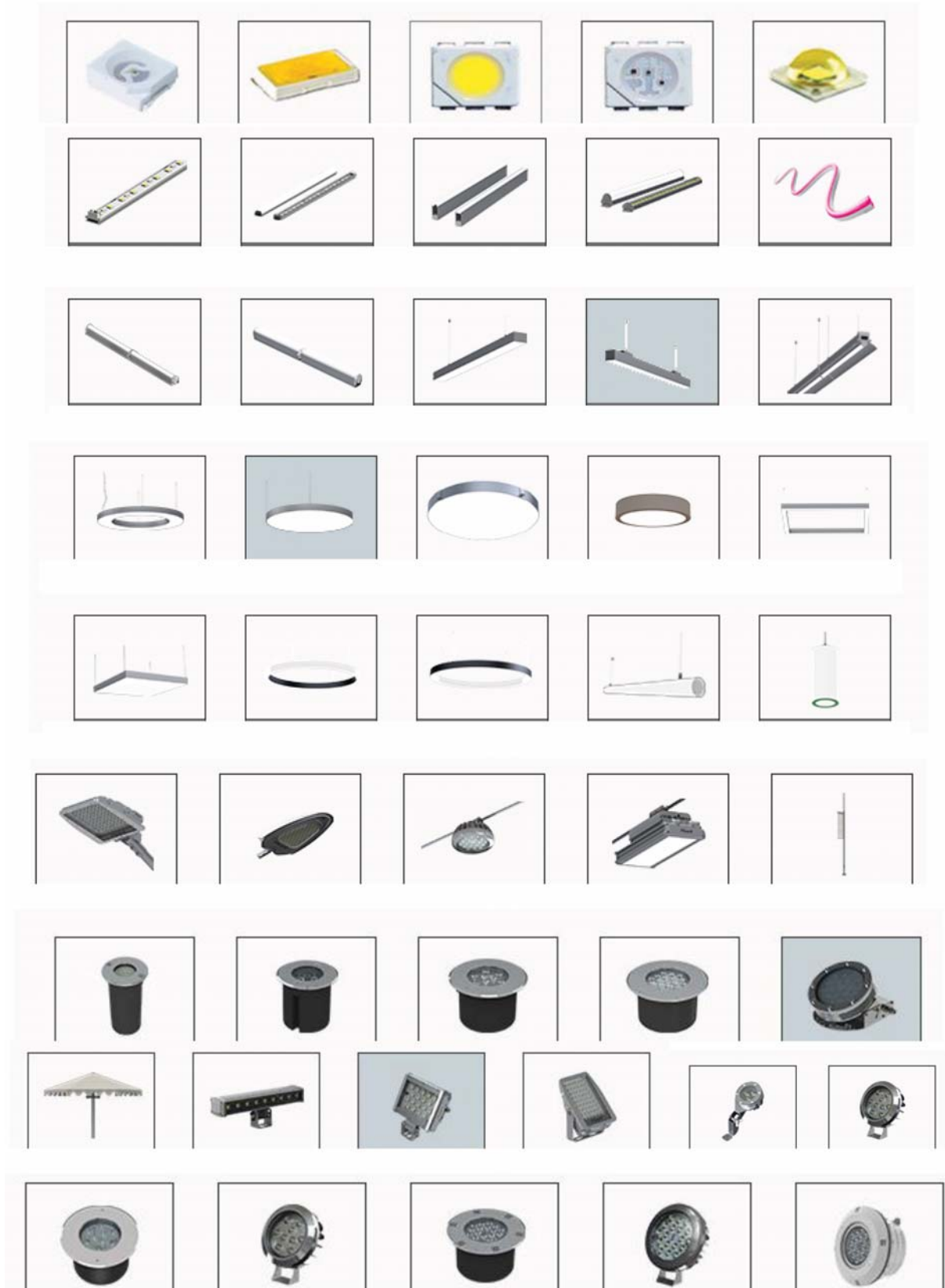
DECORATIVE POLES



HIGHWAY POLES



LED LIGHTING



UNINTERRUPTIBLE POWER SUPPLIES



VOLTAGE STABILIZERS

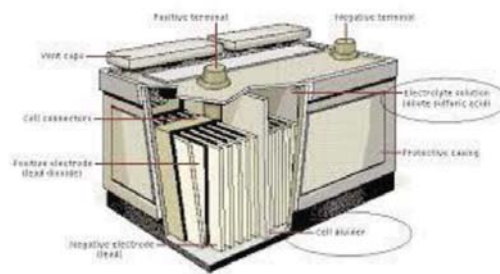
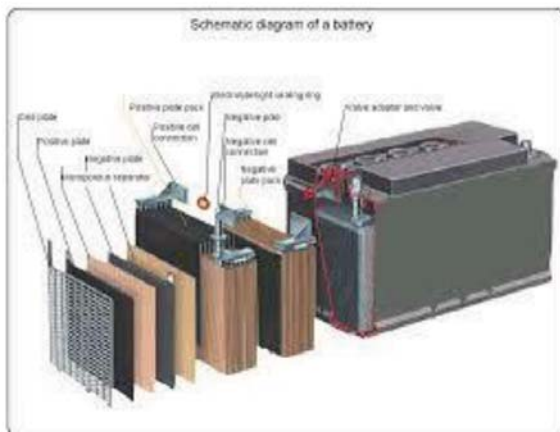


BATTERY CHARGERS

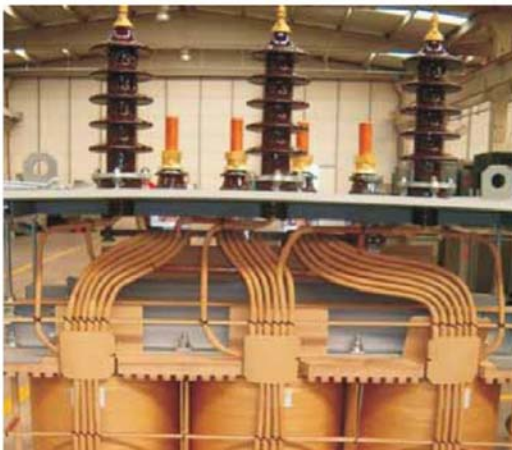


BATTERIES

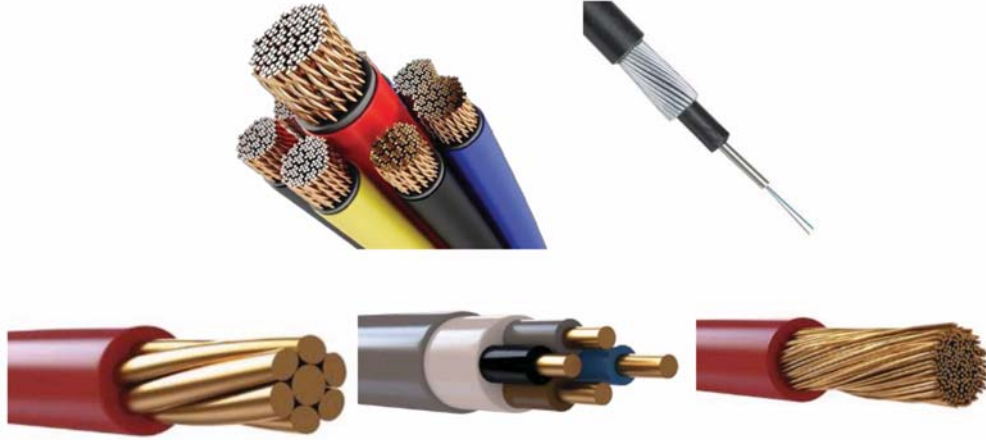
(VRLA - SLA - GEL - NICD - CAR)



TRANSFORMERS



ELECTRICAL WIRES (ALUMINIUM – COPPER)



- 1) Örgülü Alüminyum İletken
Stranded Aluminium Conductor
- 2) PVC İzole
PVC Insulation
- 3) PVC Dolgu
PVC Filler
- 4) Galvanizli Yassı Çelik Tel Zırh
Galvanized Flat Steel Wire Armour
- 5) Galvanizli Çelik Bant
Galvanized Steel Tape
- 6) PVC Kılıf
PVC Sheath

Rm : Çok Telli Yuvarlak İletken
Rm : Multi Wire Round Conductor



STANDARD
TS IEC 60502-1

TEKNİK BİLGİLER

İzin verilen işletme sıcaklığı	: 70 °C
Kısa devre sıcaklığı	: 160 °C
Test gerilimi (AC)	: 4 kV
Serim sıcaklığı min	: 5 °C
Minimum Bükme Yarı Çapı	: 15xD

KULLANIM ALANLARI

Mekanik zorlanmanın fazla olduğu yerlerde sıva üstünde, kablo kanalı içinde toprak altında şebeke ve aydınlatma kablosu olarak kullanılır. Zırhlı yapısı sayesinde dışarıdan gelebilecek darbelerle karşı dayanıklıdır.

TECHNICAL DATA

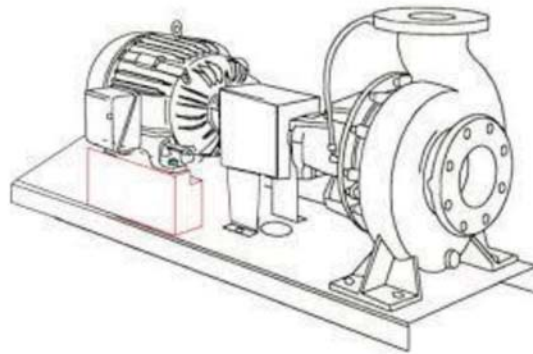
Permissible operating temperature	: 70 °C
Short circuit temperature	: 160 °C
Test Voltage (AC)	: 4 kV
Installation temperature minimum	: 5 °C
Minimum Bending Radius	: 15xD

USAGE AREAS

It is used in places where the mechanical stresses are high, used as surface mounted, in ducts, underground, as mains and lighting cable. Due to having galvanized steel tape armour they conform to heavy installation and mounting conditions.



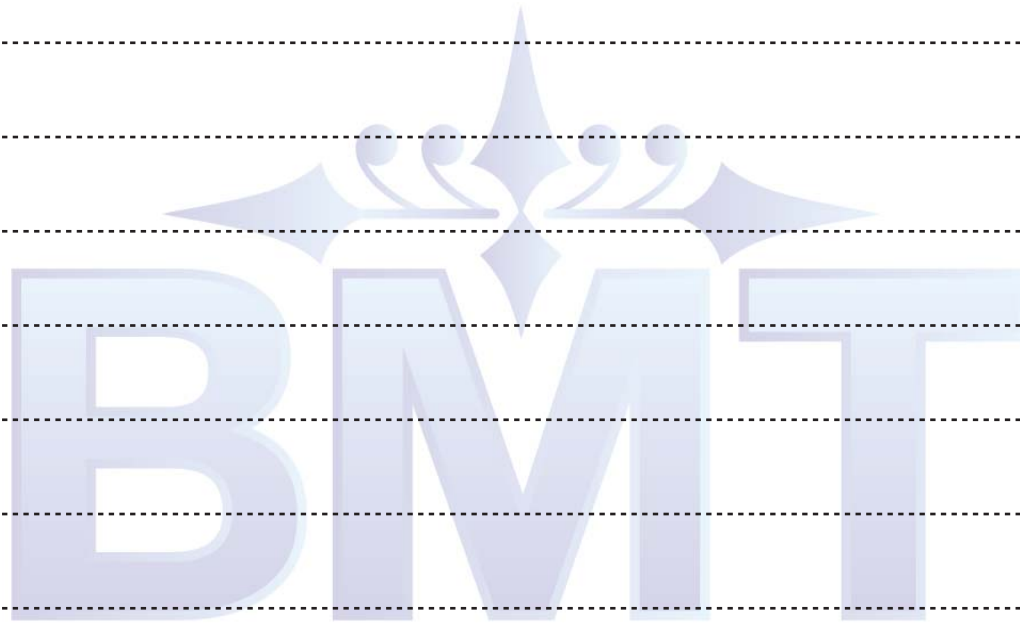
MOTORS & PUMPS



ELECTRICAL PANELS –SWITCHES –BREAKERS



NOTES



BMT EXPORT

CONSTRUCTION & ELECTRICAL COMPANY

ELECTRICAL

- DECORATIVE POLES (WITH / WITHOUT FIXTURE)
- HIGHWAY POLES
- LED LIGHTING
- UNINTERRUPTIBLE POWER SUPPLIES
- VOLTAGE STABILIZERS
- INDUSTRIAL BATTERY CHARGERS
- VRLA - SLA - NICD - GEL - CAR BATTERIES
- TRANSFORMERS
- CCTV CAMERA SYSTEMS
- ELECTRICAL WIRES
- MOTORS - PUMPS
- ELECTRICAL PANELS - SWITCHES - BREAKERS

CONSTRUCTION

- MDF - STEEL - PVC DOORS
- FLOORING (LAMINATE - WOODEN)
- KITCHEN EQUIPMENT (INOX - FURNITURE)
- BATHROOM EQUIPMENT (TILES - TUBES)
- FIRE PREVENTION SYSTEMS (FIRE PANELS - PIPES - FOAM SYSTEM)
- BOILERS
- AIR CONDITIONERS
- CONCRETE PUMPS
- FITTINGS, PIPINGS, FLANGES, VALVES

Please Contact info@bmtexport.com for any request and we will be glad to assist.

BMT TEAM - TURKEY

BMT YAPI MALZEMELERİ SAN. VE DİŞ TİC. L TD. ŞTİ.

Tantavi Mahallesi Ergenekon Caddesi EXEN KULE F Blok Kat:9 No:130 Ümraniye / İSTANBUL

www.bmtexport.com